

# KAMER MARINE



## MV MONA

### SHIPS BASICS

Type : General Cargo  
Bridge&Engine aft, Appendix-B fitted  
Built : 1995  
IMO No : 9101534  
Flag : Malta  
Call Sign : 9HGC8  
Class : RINA No 83218

### MAIN DIMENSIONS

Dwt 7811.592 mts      Dwt Winter 7580.032 mts  
Draft Summer 7,17 m      Draft Winter 7.021 m  
Grt/Nrt : 4783 / 2519  
Loa/Lbp : 99.95 / 95.00 m  
Beam/DM : 17,00 / 8,70 m  
Air Draft (Loaded) : 23.63 Mtrs  
Air Draft (Ballast) : 30.80 Mtrs  
Lightship : 2.157,00 mt  
Tpc : 15,53 mt/cm at Summer  
FWA : 160 mm  
Waterline to Top of Hatch Coaming in Laden 3,85 m  
in Ballast 6,50 m

### COMMUNICATION

Email : 9101534mvmona@gmail.com  
         : mvmona@gmn-usa.com  
Inm-C : 421594710@stratosmobile.net  
Gsm : 0090 549 658 0624

### CARGO HOLDS

Hatch Cover Sizes : (LxB)  
No.1: 35,90 m x 13,80 m; No.2: 30,80 m x 13,80 m  
Hold Dim : (LxBxH)  
Hold 1 - 35.9 m x 13.8 m x 9.70 m  
Hold 2 - 31.8 m x 13.8 m x 9,70 m  
Strength : 11,20 mt/sqm on Tanktop  
         : 1,7 mt/sqm on Hatchcovers  
Grain/Bale Cap : 313.000 Cuft/308.000 Cuft  
Double Skin, Single Decker, Box Shape Hold,  
Narrowing at Forward and Aft, Steel Floor

### ENGINES

M/engine : Krupp MAK 6M32 - 600 rpm,  
         : 2640 Kw/3590 BHP  
Generators : 2xVolvo Penta TAMD 122A, 247 Kw  
Bowthruster : 1xUlstein CPP, 300 Kw  
Propeller : 4 Blade Control Pitch, Left Hand  
         : (Anticlockwise), 3700 mm  
         : Backer Flap Ruder

### TANK CAPACITIES

Ballast Capacity : 3623,15 cbm  
MGO Capacity : 253,46 cbm  
FW Capacity : 60,72 cbm

### INSURANCE

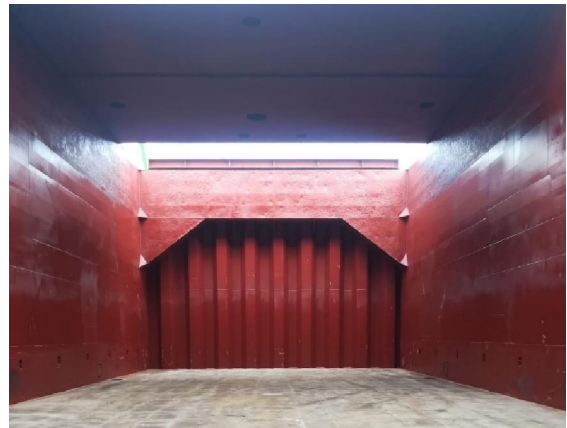
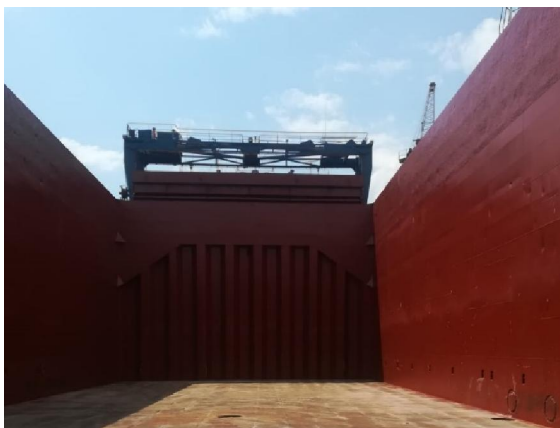
P&I : Navigators Insurance Company/UK  
H&M : Anadolu Insurance Company



HOLD NO.1



HOLD NO.2



**ANOMIS NAVIGATION LTD.**  
**Mayflower Court, the Penthouse, Nr 8,**  
**St Aloysius Street, Msida, Malta,**  
**IMO ID NO: 6043316**

